

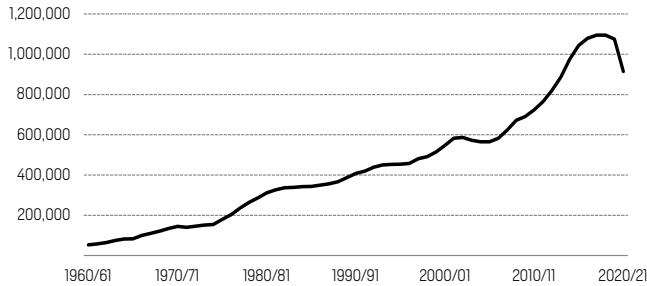


**INTERNATIONAL STUDENTS**

*Open Doors 2021* included international students enrolled at U.S. higher education institutions in the United States and online from abroad, and those on Optional Practical Training (OPT).

**INTERNATIONAL STUDENT TRENDS**

In 2020/21, the total number of international students at U.S. universities declined by 15% to 914,095 students.



	Total int'l students	% change	Total U.S. higher * education	% int'l
2016/17	1,078,822	3.4	20,185,000	5.3
2017/18	1,094,792	1.5	19,831,000	5.5
2018/19	1,095,299	0.05	19,828,000	5.5
2019/20	1,075,496	-1.8	19,720,000	5.5
<b>2020/21</b>	<b>914,095</b>	<b>-15.0</b>	<b>19,744,000</b>	<b>4.6</b>

**PLACES OF ORIGIN OF INTERNATIONAL STUDENTS**

	2019/20	2020/21	% of total	% change
<b>WORLD TOTAL</b>	<b>1,075,496</b>	<b>914,095</b>	<b>100.0</b>	<b>-15.0</b>
China	372,532	317,299	34.7	-14.8
India	193,124	167,582	18.3	-13.2
South Korea	49,809	39,491	4.3	-20.7
Canada	25,992	25,143	2.8	-3.3
Saudi Arabia	30,957	21,933	2.4	-29.2
Vietnam	23,777	21,631	2.4	-9.0
Taiwan	23,724	19,673	2.2	-17.1
Brazil	16,671	14,000	1.5	-16.0
Mexico	14,348	12,986	1.4	-9.5
Nigeria	13,762	12,860	1.4	-6.6
Japan	17,554	11,785	1.3	-32.9
Nepal	12,730	11,172	1.2	-12.2
Iran	11,451	9,614	1.1	-16.0
Bangladesh	8,838	8,598	0.9	-2.7
Turkey	9,481	8,109	0.9	-14.5
United Kingdom	10,756	8,028	0.9	-25.4
Indonesia	8,300	7,489	0.8	-9.8
Pakistan	7,939	7,475	0.8	-5.8
Colombia	7,787	7,107	0.8	-8.7
Kuwait	8,375	6,846	0.7	-18.3
Venezuela	6,855	6,122	0.7	-10.7
Hong Kong	6,778	5,878	0.6	-13.3
Spain	7,954	5,781	0.6	-27.3
France	8,471	5,643	0.6	-33.4
Germany	9,242	5,364	0.6	-42.0
Other Places of Origin	168,289	146,486	16.1	-13.0

**NEW INTERNATIONAL STUDENT ENROLLMENT**

	New int'l students	% change
2016/17	290,836	-3.3
2017/18	271,738	-6.6
2018/19	269,383	-0.9
2019/20	267,712	-0.6
<b>2020/21</b>	<b>145,528</b>	<b>-45.6</b>

**U.S. INSTITUTIONS HOSTING INTERNATIONAL STUDENTS, 2020/21**

New York University	New York	NY	17,050
Northeastern University – Boston	Boston	MA	15,880
Columbia University	New York	NY	15,015
University of Southern California	Los Angeles	CA	14,992
Arizona State University – Tempe	Tempe	AZ	13,015
University of Illinois – Urbana-Champaign	Champaign	IL	12,838
University of California – San Diego	La Jolla	CA	10,824
Boston University	Boston	MA	10,646
Purdue University – West Lafayette	West Lafayette	IN	10,500
University of California – Los Angeles	Los Angeles	CA	10,273
University of California – Berkeley	Berkeley	CA	9,184
University of Washington	Seattle	WA	8,777
University of Texas – Dallas	Richardson	TX	8,475
Pennsylvania State University – University Park	University Park	PA	8,267
University of Michigan – Ann Arbor	Ann Arbor	MI	8,252
University of California – Irvine	Irvine	CA	7,766
University of California – Davis	Davis	CA	7,422
Carnegie Mellon University	Pittsburgh	PA	7,396
University of Wisconsin – Madison	Madison	WI	7,139
Ohio State University – Columbus	Columbus	OH	6,865
All Other Institutions	-	-	703,519

**U.S. STATES HOSTING INTERNATIONAL STUDENTS**

	2019/20	2020/21	% change
California	160,592	132,758	-17.3
New York	126,911	106,894	-15.8
Texas	77,097	67,428	-12.5
Massachusetts	73,695	66,273	-10.1
Illinois	51,966	44,004	-15.3
Pennsylvania	50,070	42,477	-15.2
Florida	46,221	39,179	-15.2
Ohio	35,508	29,979	-15.6
Michigan	31,408	27,454	-12.6
Indiana	28,136	23,948	-14.9
Other States	393,892	333,701	-15.3

**ACADEMIC LEVEL TRENDS OF INTERNATIONAL STUDENTS**

	Under-graduate	% change	Graduate	% change
2018/19	431,930	-2.4	377,943	-1.3
2019/20	419,321	-2.9	374,435	-0.9
<b>2020/21</b>	<b>359,787</b>	<b>-14.2</b>	<b>329,272</b>	<b>-12.1</b>

	Non-degree	% change	OPT	% change
2018/19	62,341	-5.0	223,085	9.6
2019/20	58,201	-6.6	223,539	0.2
<b>2020/21</b>	<b>21,151</b>	<b>-63.7</b>	<b>203,885</b>	<b>-8.8</b>

Note: Percent distribution may not total 100.0 due to rounding

Note: Numbers include both enrolled international students and international students on Optional Practical Training (OPT) for all tables except new enrollments.

\*Projection of Total U.S. Higher Education. Source: National Center for Education Statistics, 2020.

The Institute of International Education (IIE) has conducted an annual census of international students at U.S. universities since its founding in 1919. Known as the *Open Doors Report* since 1954, and supported by the Bureau of Educational and Cultural Affairs of the U.S. Department of State since 1972, the report provides detailed data on student flows into and out of the U.S.

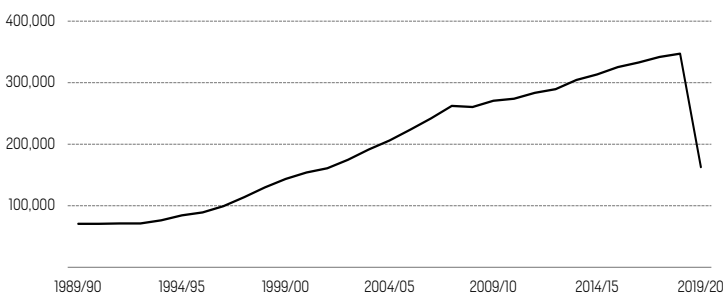
Visit us online at: <http://www.opendoorsdata.org>.

## INTERNATIONAL STUDENTS (CONT'D)

PRIMARY SOURCE OF FUNDING	2020/21	% of total	SELECTED FIELDS OF STUDY	2019/20	2020/21	% of total	% change
Personal and Family	493,889	54.0	Engineering	220,542	190,590	20.9	-13.6
Current Employment	207,679	22.7	Math and Computer Science	205,207	182,106	19.9	-11.3
U.S. College or University	168,234	18.4	Business and Management	174,470	145,658	15.9	-16.5
Foreign Government or University	22,709	2.5	Social Sciences	84,440	76,419	8.4	-9.5
Foreign Private Sponsor	4,304	0.5	Physical and Life Sciences	81,971	75,029	8.2	-8.5
U.S. Private Sponsor	2,130	0.2	Fine and Applied Arts	64,501	51,101	5.6	-20.8
U.S. Government	1,058	0.1	Health Professions	34,934	32,468	3.6	-7.1
International Organization	501	0.1	Communications and Journalism	23,925	20,613	2.3	-13.8
Other Sources of Funding	13,591	1.5	Education	15,700	15,402	1.7	-1.9
			Intensive English	21,301	8,355	0.9	-60.8

## U.S. STUDENTS STUDYING ABROAD

In 2019/20, the total number of U.S. students who studied abroad for academic credit declined by 53% to 162,633 students.



DURATION OF STUDY ABROAD	2018/19	2019/20	% change
Short-term			
8 weeks or less during the academic year	91,017	48,437	-46.8
Summer term	134,249	1,352	-99.0
Mid-length (One/two quarters or semester)	114,077	106,879	-6.3
Long-term (Academic or calendar year)	7,756	5,965	-23.1

HOST REGIONS	2018/19	2019/20	% of total	% change
Europe	193,422	94,230	57.9	-51.3
Latin America & Caribbean	47,954	21,819	13.4	-54.5
Asia	40,602	14,792	9.1	-63.6
Oceania	15,434	11,529	7.1	-25.3
Multiple Destinations	26,074	8,836	5.4	-66.1
Sub-Saharan Africa	13,455	5,444	3.3	-59.5
Middle East & North Africa	7,965	5,134	3.2	-35.5
North America	2,107	833	0.5	-60.5
Antarctica	86	16	0.0	-81.4

Note: Cyprus and Turkey are included in Europe; Mexico is included in Latin America

SELECTED FIELDS OF STUDY	2018/19	2019/20	% of total	% change
Business and Management	71,792	33,829	20.8	-52.9
Social Sciences	59,158	31,239	19.2	-47.2
Foreign Language & Int'l Studies	23,833	12,749	7.8	-46.5
Physical and Life Sciences	28,197	12,078	7.4	-57.2
Fine and Applied Arts	23,791	11,154	6.9	-53.1

RACE/ETHNICITY	2018/19	2019/20
White	68.7	70.0
Hispanic or Latino(a)	10.9	10.6
Asian or Pacific Islander	8.9	8.6
Black or African-American	6.4	5.5
Multiracial	4.7	4.8
American Indian or Alaska Native	0.4	0.5

DESTINATIONS	2018/19	2019/20	% of total	% change
<b>WORLD TOTAL</b>	<b>347,099</b>	<b>162,633</b>	<b>100.0</b>	<b>-53.1</b>
Spain	33,849	19,792	12.2	-41.5
Italy	39,043	19,731	12.1	-49.5
United Kingdom	39,358	19,147	11.8	-51.4
France	18,465	8,528	5.2	-53.8
Australia	10,665	8,252	5.1	-22.6
Ireland	11,777	4,712	2.9	-60.0
Germany	12,029	4,512	2.8	-62.5
Costa Rica	8,333	3,917	2.4	-53.0
Japan	8,928	3,406	2.1	-61.9
Denmark	4,846	3,130	1.9	-35.4
New Zealand	4,233	3,096	1.9	-26.9
Mexico	6,340	2,999	1.8	-52.7
Czech Republic	5,480	2,667	1.6	-51.3
China	11,639	2,481	1.5	-78.7
Netherlands	4,182	2,202	1.4	-47.3
South Africa	5,278	2,159	1.3	-59.1
South Korea	4,558	1,942	1.2	-57.4
Argentina	3,317	1,920	1.2	-42.1
Israel	3,532	1,893	1.2	-46.4
Greece	5,834	1,829	1.1	-68.6
Ecuador	3,675	1,787	1.1	-51.4
India	3,366	1,736	1.1	-48.4
Austria	3,039	1,405	0.9	-53.8
Chile	3,190	1,332	0.8	-58.2
Thailand	2,859	1,228	0.8	-57.0
Other Destinations	89,284	36,830	22.6	-58.7

## PARTICIPATION

	U.S. study abroad total	U.S. higher education total	%
All U.S. undergraduates studying abroad in academic year 2019/20	147,345	16,016,843*	0.9
All U.S. undergraduates who study abroad during their degree program	147,345	2,776,051**	5.3
U.S. Bachelor's students who study abroad during their undergraduate program	146,044	1,866,449***	7.8

U.S. Higher Education Data Source: National Center for Education Statistics, 2020

\* Total undergraduate enrollment in the United States

\*\* U.S. students receiving Associate and Bachelor's degrees

\*\*\* U.S. students receiving Bachelor's degrees

Note: The numbers above do not include international students enrolled at U.S. higher education institutions studying abroad for academic credit.

## OTHER FORMS OF EDUCATION ABROAD

In addition to the 162,633 U.S. students who received academic credit for study abroad in 2019/20, 252 institutions reported that an additional 11,256 U.S. students participated in non-credit work, internships, volunteering, and research abroad.